



Zentrum Paul Klee
Bern

Founded by
Maurice E. and Martha Müller
and the heirs of Paul Klee

Download press images:
zpk.org/press

All copyrights are reserved. The complete caption must be used and the artwork reproduced as illustrated. It is only permitted to reproduce the images in conjunction with coverage of the exhibition *Hannah Höch, Assembled Worlds*.

Press images

Hannah Höch. *Assembled Worlds*
10.11.2023–25.2.2024



01

Hannah Höch
Flucht [Flight], 1931
Collage
23 x 18,4 cm
Institut für Auslandsbeziehungen e.
V., Stuttgart
© 2023, ProLitteris, Zurich



02

Hannah Höch
Der Vater [The Father], 1920
Collage
34 x 27,5 cm
Galerie Berinson, Berlin
© 2023, ProLitteris, Zurich



03

Hannah Höch
Geld [Money], um 1922
Collage
11 x 18,3 cm
Institut für Auslandsbeziehungen e.
V., Stuttgart
© 2023, ProLitteris, Zurich



04

Hannah Höch
Hochfinanz [High finance], 1923
Collage
35,1 x 30,1 cm
Galerie Berinson, Berlin
© 2023, ProLitteris, Zurich

Download press images:

zpk.org/press

All copyrights are reserved. The complete caption must be used and the artwork reproduced as illustrated. It is only permitted to reproduce the images in conjunction with coverage of the exhibition *Hannah Höch. Assembled Worlds*.



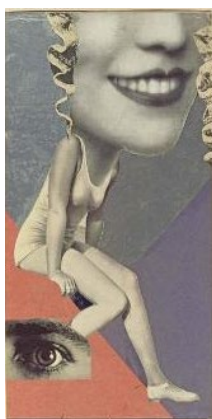
05

Hannah Höch
Der Melancholiker [The Melancholic],
1925
Collage
16,8 x 13 cm
Institut für Auslandsbeziehungen e.
V., Stuttgart
© 2023, ProLitteris, Zurich



06

Höch Hannah
Untitled (from an ethnographic
museum), 1929
Collage
22,3 x 15,3 cm
Museum für Kunst und Gewerbe,
Hamburg
© 2023, ProLitteris, Zurich



07

Höch Hannah
Für ein Fest gemacht [Prepared for a
celebration], 1936
Collage
36 x 19,8 cm
Institut für Auslandsbeziehungen e.
V., Stuttgart
© 2023, ProLitteris, Zurich



08

Hannah Höch
Eule mit Lupe [Owl with Magnifying
Glass], 1945
Collage on cardboard
19,5 x 25,2 cm
Private collection
© 2023, ProLitteris, Zurich

Download press images:
zpk.org/press

All copyrights are reserved. The complete caption must be used and the artwork reproduced as illustrated. It is only permitted to reproduce the images in conjunction with coverage of the exhibition *Hannah Höch. Assembled Worlds*.



09
Hannah Höch
Fata Morgana, 1957
Collage
21,2 x 28,2 cm
Private collection
© 2023, ProLitteris, Zurich



10
Hannah Höch
Friedensengel [Angel of Peace], um 1958
Collage on cardboard
22,2 x 17,5 cm
Berlinsche Galerie – Landesmuseum für Moderne Kunst, Fotografie und Architektur / Repro: Kai-Annett Becker / Berlinsche Galerie
© 2023, ProLitteris, Zurich



11
Hannah Höch
Um einen Roten Mund [Around a Red Mouth], um 1967
Collage
20,5 x 16,5 cm
Institut für Auslandsbeziehungen e. V., Stuttgart
© 2023, ProLitteris, Zurich



12
Untitled (Hannah Höch. Double-exposed portrait), n. d.
Silver gelatine print
12 x 8,5 cm
Berlinsche Galerie – Landesmuseum für Moderne Kunst, Fotografie und Architektur / Repro: Anja Elisabeth Witte/Berlinsche Galerie